

Developments of the Kirtland's Warbler Conservation Team and what's next!

Abigail Ertel

March 15, 2017

Kirtland Community College

Grayling, MI

1 year ago...



Fostering coordination and communication that maintains a healthy Kirtland's warbler population

But a bit before that...

- Key Developments
 - 2011 MOU
 - New partners – Kirtland's Warbler Alliance
 - Breeding Range Conservation Plan
- Twice yearly KW Collaborative Meetings
 - Intent – A collaborative network of public and private partners working to ensure the long-term sustainability of the species on its associated habitats

It's the same...but different.

- **Key Changes**
 - Self-governing
 - Philosophy of long-term sustainability rather than philosophy of recovery
 - Full life-cycle
 - Funding
- **Purpose** - Provide avenues of communication and coordination that help facilitate the key objectives of the Kirtland's Warbler Breeding Range Conservation Plan and help facilitate discussion regarding funding anticipated funding needs/priorities



1 year ago...



Fostering coordination and communication that maintains a healthy Kirtland's warbler population

Initial Steering Committee



Fostering coordination and communication that maintains a healthy Kirtland's warbler population

Provide continuity for Kirtland's Warbler conservation programs by preserving institutional knowledge and serving as a resource collective for new and expanding members of the KWCT community.

Initial Charge: Creating the necessary structure and framework for the KWCT to become fully functional by March 31, 2017

- Develop communications strategies to support program goals;
- Determine initial priorities, membership, governance and operational procedures;
- Obtain feedback from the broader KWCT at key decision points;
- Explore opportunities to expand partnerships;
- Collaborate to seek funding for priority conservation actions;
- Support and integrate subcommittee activities;
- Track accomplishments; and
- Sustain public support for the KWCT mission.



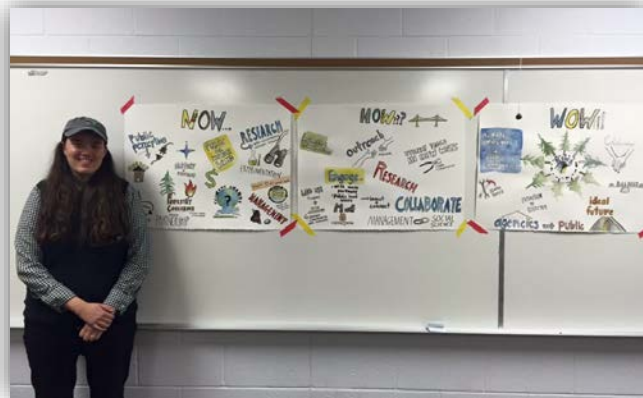
15 Core Elements for a Fully Operational KW Conservation Team

1. Adaptive Management Philosophy/Framework (with monitoring and research embedded with habitat management and a full life cycle underpinning)
2. Ecosystem/Landscape (big picture, long-term)
3. Partnerships (and partnership building)
4. Economics, Analysis, Marketing, and Messaging
5. Archive
6. Fundraising
7. Cowbird Monitoring/Nest Productivity
8. Progress Reports (internally and externally)
9. Increase distribution of KIWA throughout breeding grounds
10. Specialized expertise (habitat management, funding, human dimensions, communication, biology/ecology, economics)
11. Outreach and Education
12. Connectivity Across the Full Life Cycle (including migration and wintering; linking birds and people)
13. Broader support base
14. Facilitator/Coordinating Body (Leader)
15. Conservation Plan

Fostering coordination and communication that maintains a healthy Kirtland's warbler population

Work Plans and Work Groups!

- Identify and populate subcommittees
- Integrate Recovery Team Recommendations
- Identify and make recommendations on governance/conduct business
- Communication to broader community



Initial Subcommittees and Leads:

Non Breeding Season Conservation Subcommittee

Lead: David Ewert

The Nature Conservancy

dewert@tnc.org

Breeding Season Conservation Subcommittee

Lead: Keith Kintigh

Michigan Department of Natural Resources

kintighk@michigan.gov

Human Dimensions/Capacity Building Subcommittee

Lead: Abigail Ertel

Huron Pines

abby@huronpines.org

Working Group Members: Sara Siekierski (lead); Carol Bocetti; Kim Piccolo; Tim Greco; Keith Kintigh; Dan Kennedy; Katie Koch; Abby Ertel

Subcommittee Development November 2016-March 2017

- Identify Priorities and People
- Outline goals and objectives
- Working calls and face-to-face meetings
 - Engaging more people, new people
- Conservation Business Plans
 - Strategies, actions and costs
 - Greater coordination, overall understanding of “conservation forever”

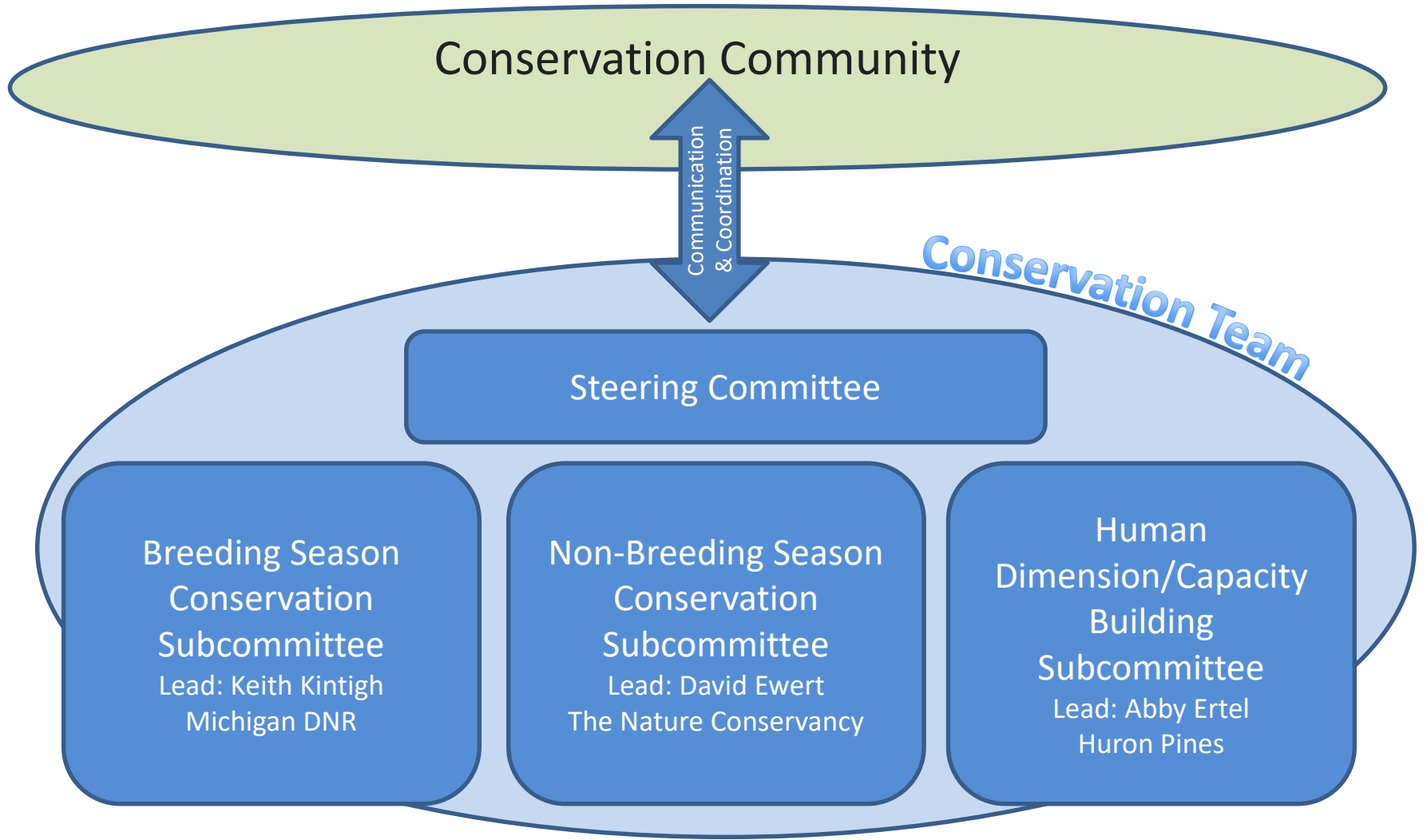


Diagram of Communication & Coordination Structure

Fostering coordination and communication that maintains a healthy Kirtland's warbler population

KW Recovery Team developed recommendation at the final KWRT meeting on March 30, 2016.

KW Conservation Team tasked a work group to prioritize the recommendations at the first KWCT meeting on March 31, 2016.

The work group met to organize and prioritize the recommendations;

- Davin Lopez (WI DNR)
- Keith Kintigh (MI DNR)
- Ken Tuininga (CAN Endangered Species)
- Kim Grvels (WI DNR)
- Pat Ryan (USDA Wildlife Services)
- Steve Sjogren (USDA Hiawatha NF)

The work group used the new KWCT subcommittee structure to organize and prioritize the recommendations;

- Steering Committee
- Breeding Season
- Non-breeding Season
- Human Dimensions/Capacity Building



Breeding Season Recommendations

CATEGORY	EXAMPLE ACTION ITEMS
Monitoring and Evaluation	<p>Develop a consistent population monitoring protocol to include different methods used across the breeding range.</p> <p>Work with researchers on adaptive management objectives, indicators and monitoring/research needs.</p>
Improve Breeding Distribution	<p>Meet the Conservation Plan goal of 100 pair outside NLP.</p> <p>Develop experimental habitat to reduce costs and increase biodiversity and marketability.</p>
Cowbird Management	<p>Evaluate the cowbird trapping program to address challenges, increase efficiency and reduce cost.</p>
Partnerships	<p>Work on establishing new partners in KW habitat management.</p>

Non-breeding Season Recommendations

CATEGORY	EXAMPLE ACTION ITEMS
Winter Habitat	<p>Complete a winter range assessment and literature review (ongoing D. Ewert).</p> <p>Develop a winter range and migration conservation plan.</p>

Governance and Communication

- **Charter**
 - Formalizes purpose, process and organization
 - Decision making
 - Adaptive Management
- **Communication**
 - Monthly Steering Committee Calls
 - Electronic summary of March 2017 launch
 - Developing distribution list - ongoing
 - Webinar (October 2016)
 - March 2017 Workshop – information sharing

Next Steps in 2017/2018

- Evaluation
- Funding and prioritizing
 - Conservation Business Plans - Subcommittees
- Identify new needs/opportunities
 - Work groups?
 - Funding Ad Hoc Committee
- Focus on communication
 - Internal
 - External

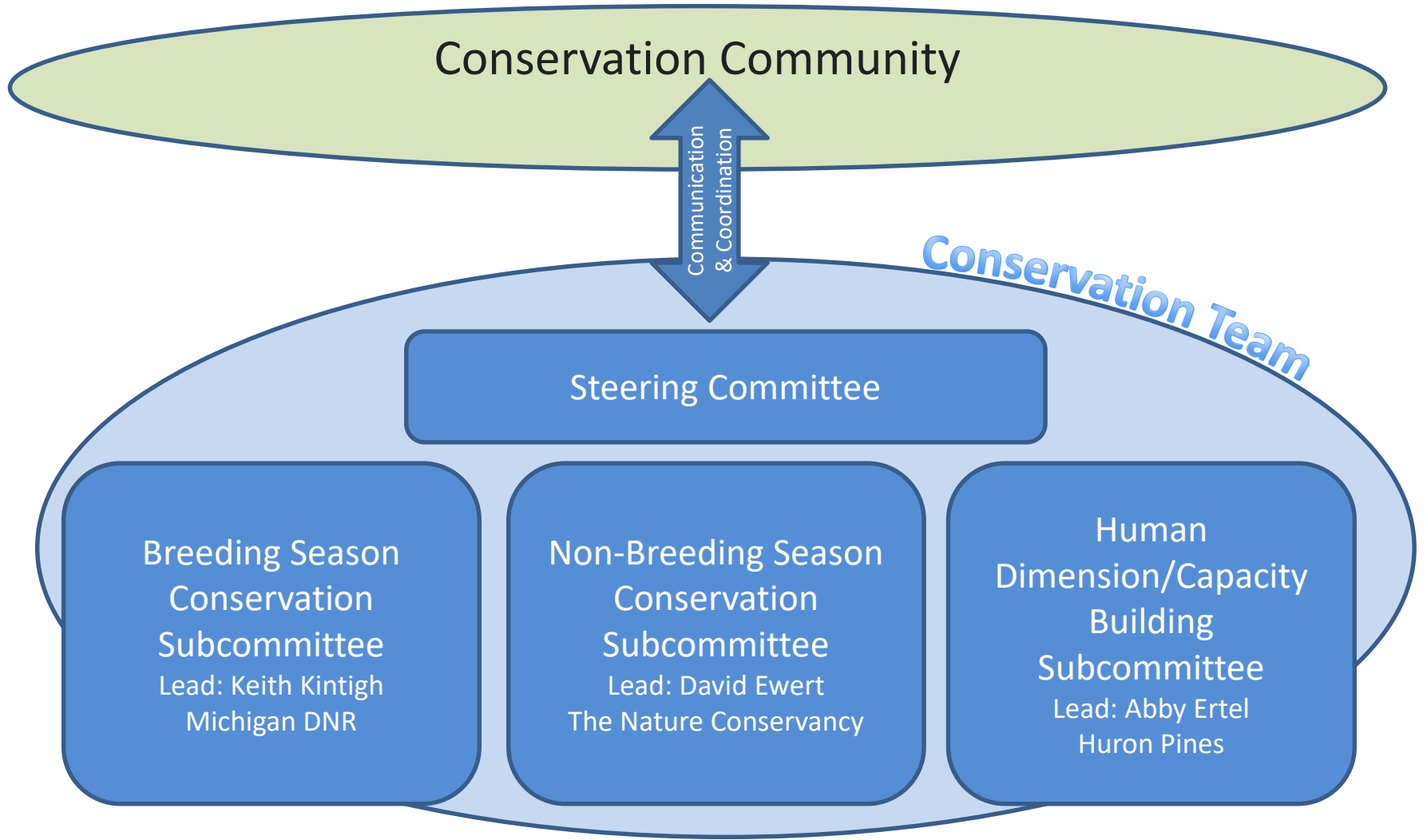


Diagram of Communication & Coordination Structure

Fostering coordination and communication that maintains a healthy Kirtland's warbler population

Thank you!

Abigail Ertel
Kirtland's Warbler Conservation Team
Coordinator
abby@huronpines.org